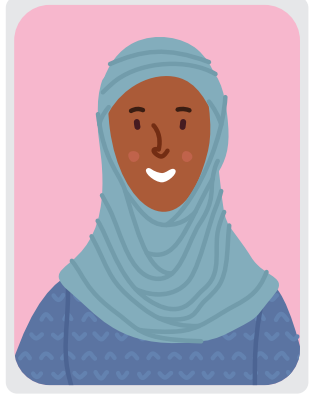



THE **ADVICE** YOU NEED








NEAR YOU!

ADVICE HUB LOCATIONS


Location	Date & time	Advice available
 <p>The Forum, Trafalgar Road SE10 9EQ</p>  <p>Vouchers for the café</p>	Mondays 10am to 12noon	Debt, welfare benefits, housing and immigration
 <p>Migrant Hub - Woolwich Common Community Centre, Leslie Smith Square SE18 4DW</p>  <p>Community meal</p>	Tuesdays 10.30am to 1.30pm	Immigration, advocacy and housing
 <p>St Mary's Community Centre, Eltham High Street SE9 1BJ</p>  <p>Takeaway frozen meal</p>	Wednesdays 10am to 12noon	Debt, welfare benefits and housing
 <p>Thamesmead Moorings Sociable Club, Arnott Close SE28 8BG</p> <p><i>*This hub is run by Peabody and funded by the GLA</i></p>	Wednesdays 9.30am to 12.30pm	Housing and immigration advice
 <p>Glyndon Community Centre, Raglan Road SE18 7LB</p>  <p>Takeaway frozen meal</p>	Thursdays 10am to 12noon	Debt, welfare benefits, housing and immigration
 <p>Woolwich Clockhouse Community Centre, Woolwich Dockyard SE18 5QL</p>	Fridays 9.30am to 12noon	Welfare benefits, housing, immigration and debt

ROAMING ADVICE HUB LOCATIONS

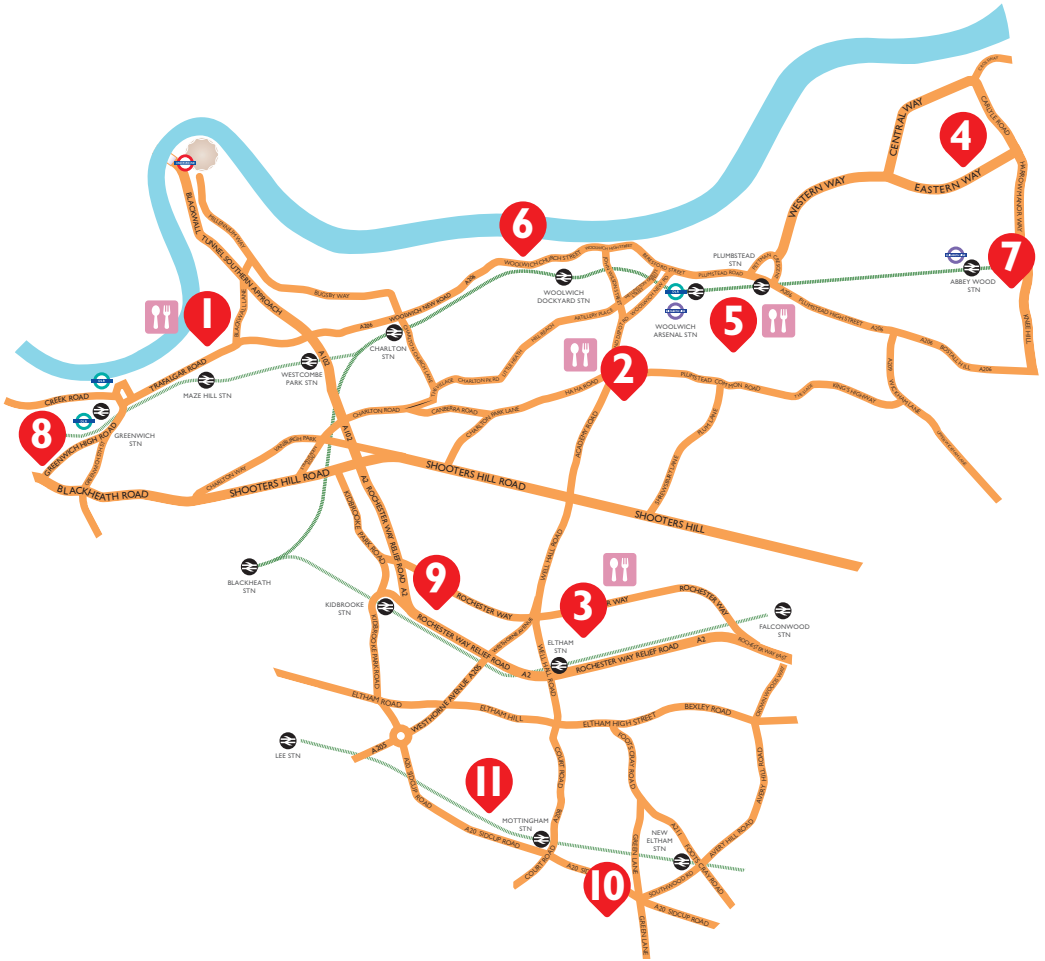
Location	Date & time	Advice available
 <p>Abbey Wood Community Centre, 4 Knee Hill, Abbey Wood, London SE2 0YS</p>	Every first Tuesday of the month 10am to 12noon	Debt, welfare benefits and housing
 <p>Greenwich West Community and Arts Centre, 141 Greenwich High Road SE10 8JA</p>	Every second Tuesday of the month 10am to 12noon	Debt, welfare benefits and housing
 <p>Storkway Children's Centre, Ridgebrook Road SE3 9QX</p>	Every third Tuesday of the month 10am to 12noon	Debt, welfare benefits and housing
 <p>Coldharbour Community Centre, William Barefoot Drive, Coldharbour Estate, London SE9 3JD</p>	Every third Tuesday of the month 2pm to 4pm	Debt, welfare benefits and housing
 <p>Middle Park Community Centre, 150 Middle Park Avenue, London SE9 5SD</p>	Every fourth Tuesday of the month 10am to 12noon	Debt, welfare benefits and housing

Hubs are not open on bank holidays.

We know times are tough. You can find lots of information about support from the council, local charities, and community groups at:
royalgreenwich.gov.uk/greenwich-supports

Food will be provided at locations marked with a . See further details inside this leaflet.

GREENWICH SUPPORTS



Get the right support, when and where you need it. Whether you need help with your finances, your immigration status, or want to know what benefits you are entitled to – we will be on hand to help you.

For more information visit royalgreenwich.gov.uk/advicehubs

